

CAMERA CALIBRATION CERTIFICATE

CAMERA TYPE : RC10A

LENS TYPE : 15/4 UAG A

LENS NO. : 13084

CALIBRATION DATE : 25.06.85

WILD HEERBRUGG LTD



CAMERA CALIBRATION

CAMERA: RC10A LENS: 15/4 UAG A NO.: 13084 CALIBRATION DATE: 25.06.85

APERTURE : F / 4.0
 FILTER ON GONIOMETER : VIS (400 - 700 NM)
 FILTER ON CAMERA : --
 CALIBRATED FOCAL LENGTH : 153.01 MM

RADIAL DISTORTION (MICROMETERS)

 REFERRED TO PRINCIPAL POINT OF SYMMETRY (PPS)
 (POSITIVE VALUES DENOTE IMAGE DISPLACEMENT AWAY FROM CENTER)

RADIUS MM	SEMI - DIAGONALS				MEAN
	1	3	2	4	
10	0.9	0.0	0.5	0.4	0.4
20	1.1	-0.1	1.0	0.5	0.6
30	0.6	0.3	1.1	0.4	0.6
40	0.9	0.5	0.8	0.4	0.6
50	0.8	0.0	1.0	0.0	0.4
60	0.1	-0.1	1.4	-0.1	0.3
70	0.3	0.2	0.9	0.2	0.4
80	-0.2	0.8	0.8	0.6	0.5
90	0.6	0.6	0.7	1.0	0.7
100	-0.2	1.4	0.9	1.5	0.9
110	-0.2	0.8	0.7	1.9	0.8
120	-0.3	-0.1	-0.8	0.8	-0.1
130	-0.8	-0.6	-0.5	0.5	-0.3
140	-1.5	-1.8	-0.9	-1.5	-1.4
148	-1.0	-2.7	-0.3	-2.1	-1.5

PHOTOGRAPHIC RESOLUTION (LINE PAIRS PER MILLIMETER)

 INTERNATIONAL 3-LINE TEST-CHART, CONTRAST (LOG) : 2.0
 APERTURE : 4.0
 FILTER : 450 NM
 FILM : AGFAPAN 25 PROFESSIONAL (ASA SPEED: 25)
 DEVELOPER : KODAK HC110 PREPARATION 2 SOLUTION C

ANGLE: (DEGREES)	0	5	10	15	20	25	30	35	40	45
RAD.	67	84	93	91	79	68	73	69	57	42
TANG.	67	74	92	79	74	69	71	57	44	38

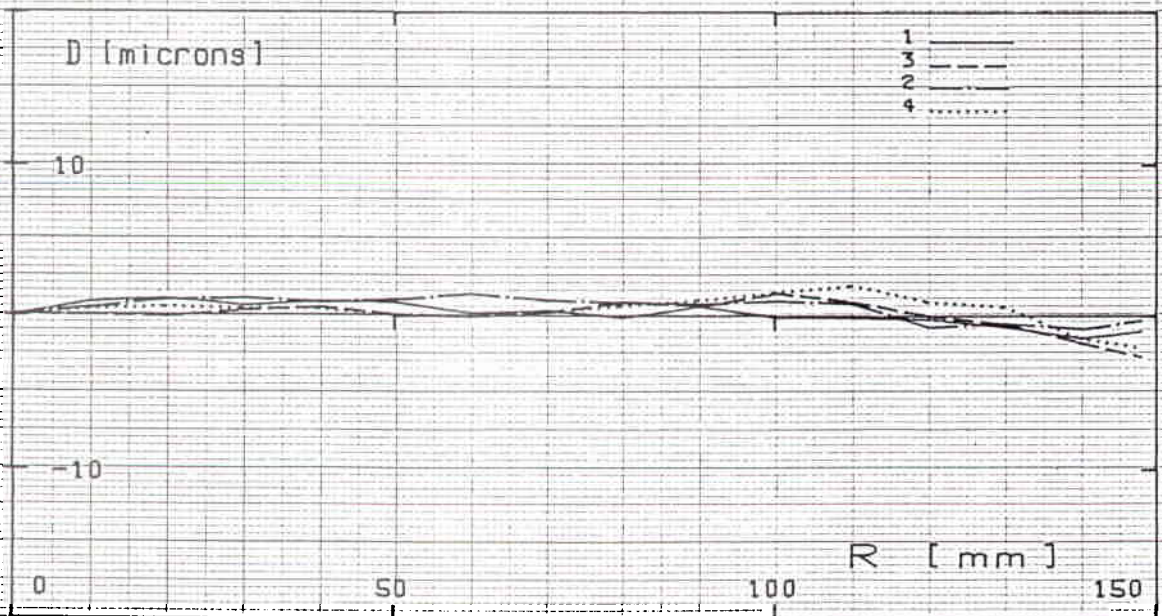
AWAR (AREA WEIGHTED AVERAGE RESOLUTION) IN LP/MM : 68

RC10A 15/4 UAG A NO. 13084 25.06.85

APERTURE : F / 4.0
FILTER ON GONIOMETER : UIS (400 - 700 NM)
FILTER ON CAMERA : --
C.F.L. : 153.01 MM



MEAN RADIAL DISTORTION CURVE



RADIAL DISTORTION FOR SEMI-DIAGONALS REFERRED TO PPS