

70.04.23.

Calibration Certificate

Wild Lens Cone / ~~Camera~~

No. 15 JAg. 281

Type: RC5/RC8

This calibration certificate replaces the
previous certificate issued on 20.1.65

Lens Cone / Camera

Type: 55/108
 No.: 251
 Format: 251

Lens Calibration date: 23.4.70

Type: Universal - Aviogon
 No.: 251
 f = 152.81 mm
 max. aperture: f:5.6

Resolving Power (Lines per millimeter)

High contrast and max. aperture f:5.6

Film: Agfa IP 15 blank

Glass plate:

	0°	5°	10°	15°	20°	25°	30°	35°	40°	45°	50°	55°	60°
rad.	53	53	52	51	49	43	51	49	26	8			
tang.	53	53	51	49	47	44	44	40	31	17			

rad.													
tang.													

Distortion in millimeters

The given distortion is the arithmetic mean of the four semi-diagonals. Positive values denote image displacement away from center.

Goniometer measurements made with no filter on Lens Cone / ~~Camera~~

Calibrated focal length: 152.81 mm

Radius	20	40	60	80	100	120	140	148
Distortion	+0.003	+0.006	+0.004	-0.001	-0.006	-0.007	+0.004	+0.015

The displacement of the principal point of autocollimation from the intersection of the diagonals (fiducial center) is within 0.01 mm.

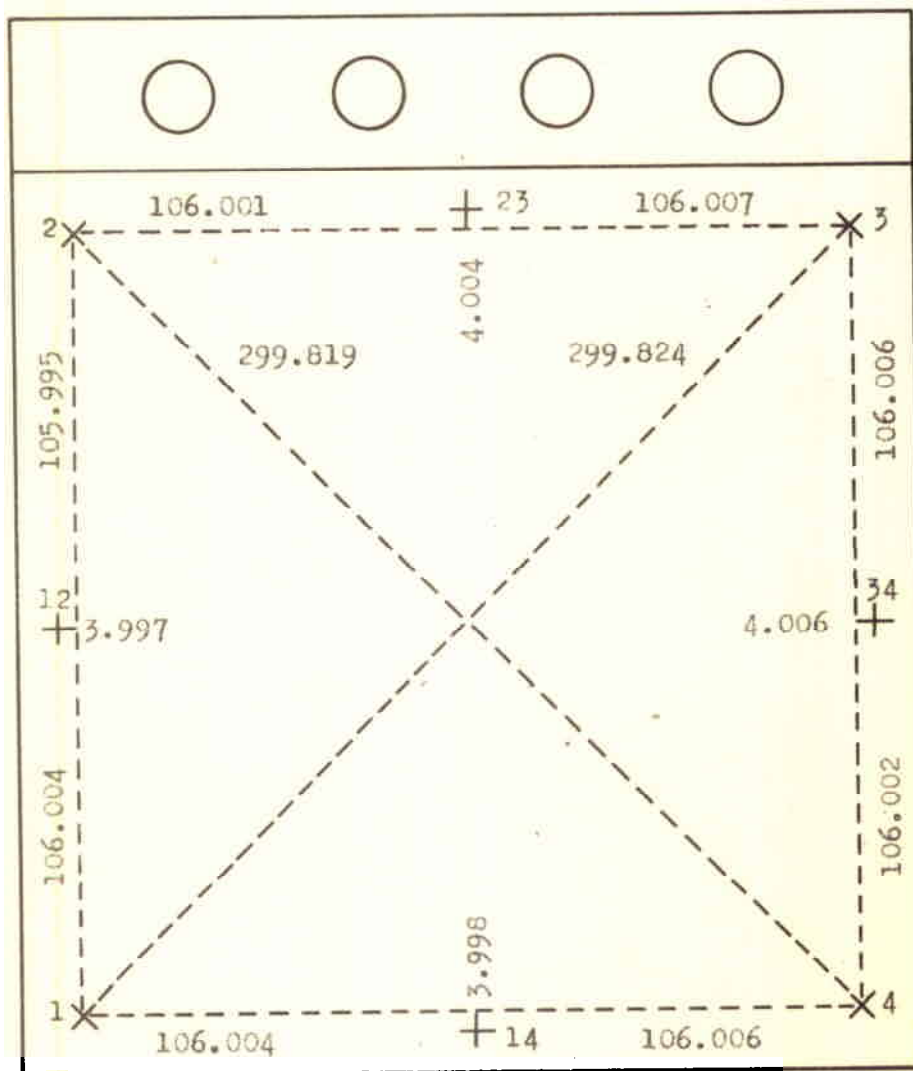
Date of Dispatch: 24.4.70

WILD HEERBRUGG
 Limited

LENS CONE No. 15 UAg. 281

FIDUCIAL MARK DISTANCES in mm:

(Seen on Focal Plane Frame)



Date: 23.4.70

WILD HEERBRUGG LTD.

GR

Lens Cone/Camera

Lens

Calibration date: 23.4.70

Type: RC5/RC8

Type: Universal - Aviogon

Format: 9" x 9"

No.: 15 UAg. 281 f = 152.81 mm

Coordinates (Origin: Fiducial Center) of

Point of best Symmetry (S):

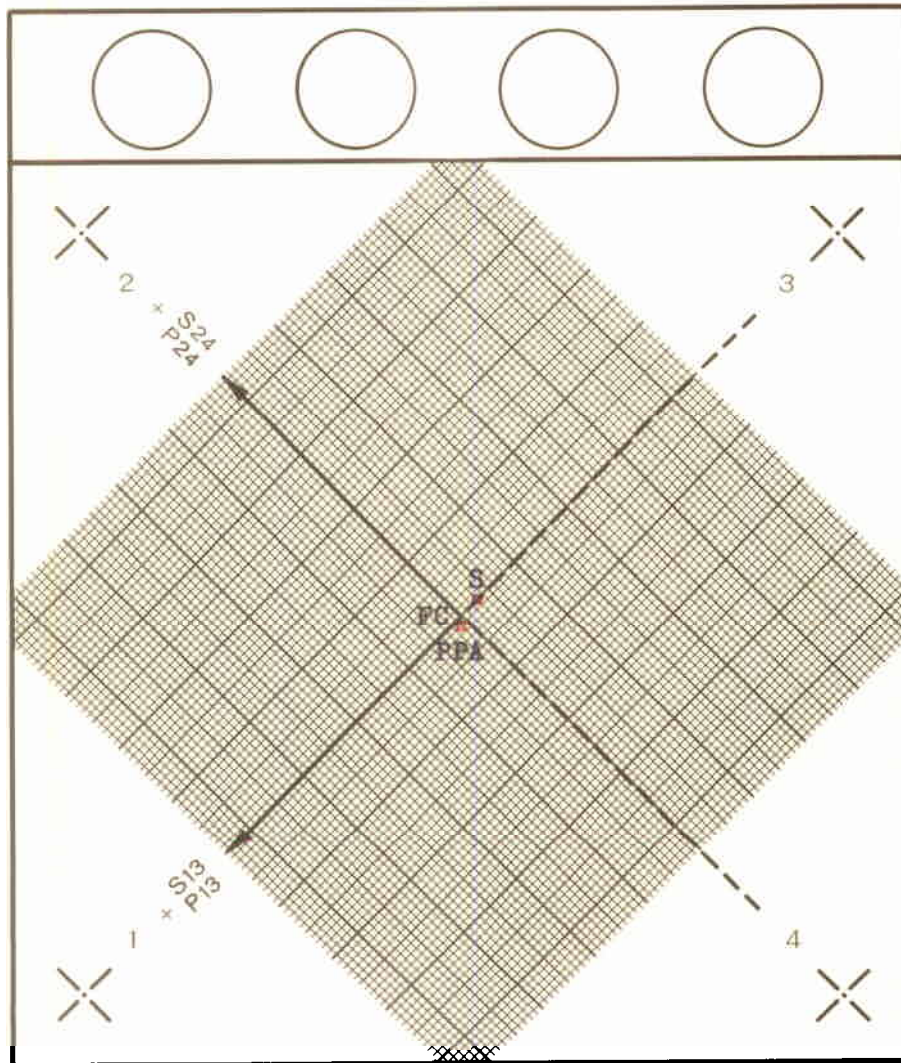
S13 = -3 μm S24 = 0 μm

Principal Point of Autocollimation (PPA):

P13 = +1 μm P24 = -1 μm

(Calibration without filter)

(Seen on Focal Plane Frame)



SCALE: 1000:1

Distances between Fiducial Marks in mm: See page 4

1 - 2 =

1 - 3 =

2 - 3 =

2 - 4 =

3 - 4 =

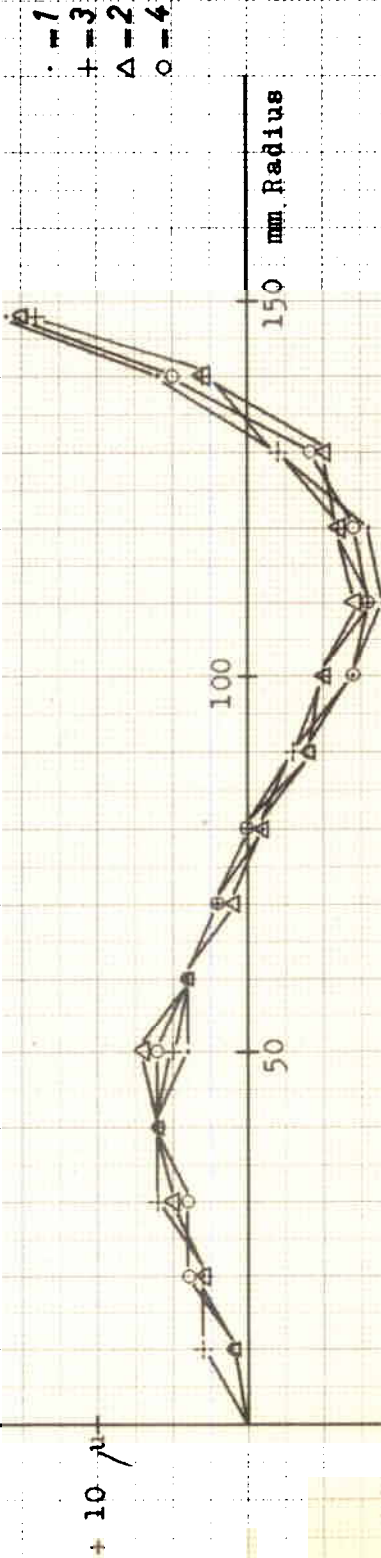
4 - 1 =

WILD HEERBRUGG LTD

MR.

WILD UNIVERSAL - AVIOGON Lens Cone 9" x 9" No. 15 UAG. 281 f - 152.81 mm

Distortion μ



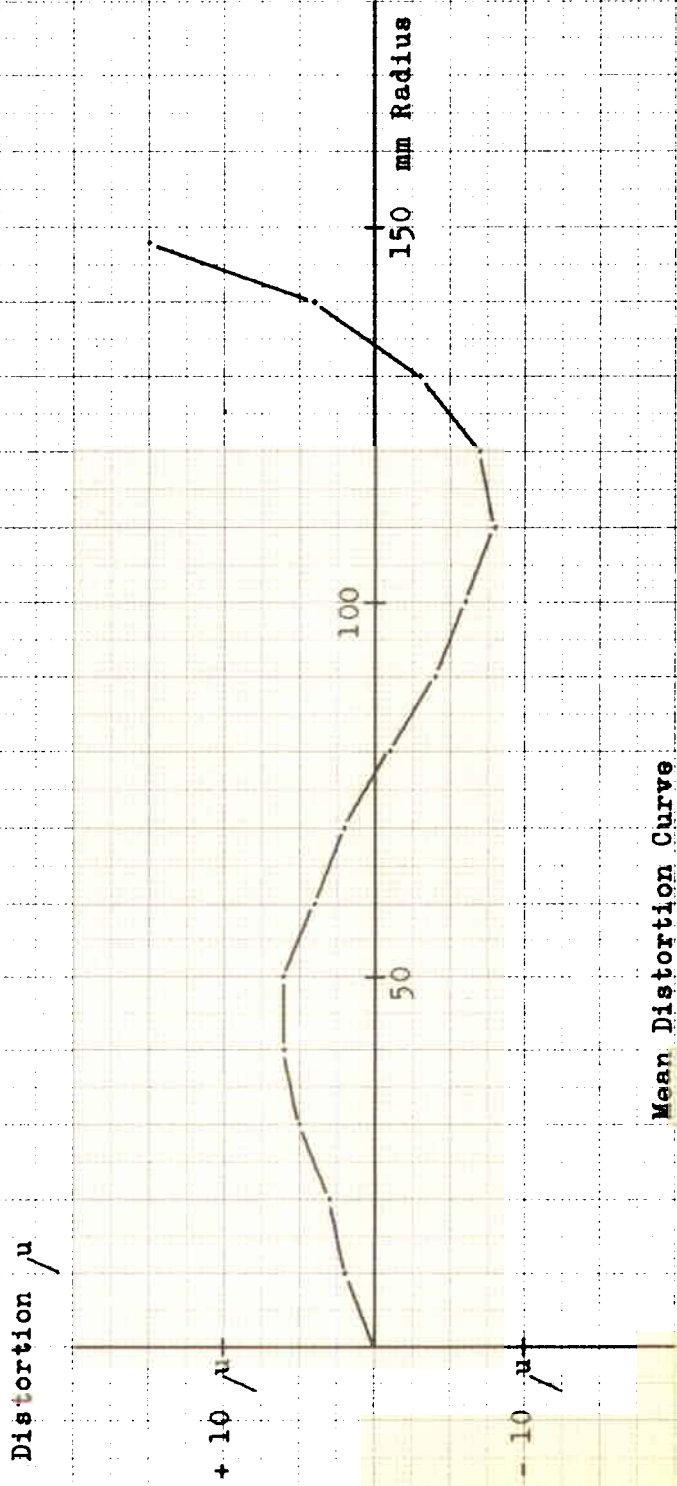
Origin: Point of Symmetry

WILD HEERBRUGG LTD

23.4.70

MR.

WILD UNIVERSAL - AVIOCON Lens Cone 9" x 9" No. 15 UAG. 281 f = 152.81 mm



Mean Distortion Curve

WILD HEERBRUGG LTD
23.4.70

RR